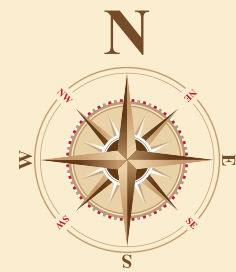


LOCATION MAP



RERA No.- PRM/KA/RERA/1251/446/PR/130422/004835
www.rera.karnataka.gov.in



Ashish Narayana

~ ROW HOUSE ~

3 BHK PREMIUM DUPLEX ROW HOUSE



A Project of:



56/2, Behind Vibgyor School, Thubarahalli,
 Varthur Road, Bengaluru-560 066.

E-mail : info@adab.in, sales@adab.in

Website : www.adab.in

Off. Ph. : 80500 99530

Mobile : +91 93422 26111

Architects



VASANT KUMAR ASSOCIATES
 ARCHITECTS • ENGINEERS • INTERIOR DESIGNERS

64/A, Sunkal Farm, B.T.S.Road
 Wilson Garden, Bengaluru-560 027.

Phone : 080 22219910

Mobile : +91 98450 45219

E-mail : vasantkumarnd@gmail.com

Web : www.vasantkumarassociates.com

☎ 934-2226-111 ✉ sales@adab.in 🌐 www.adab.in

www.adab.in





About Us

Aashish Developer Builders, Incorporated in 2005, Aashish Developer & Builders ("ADAB") is primarily focused on residential projects- to build homes showcasing engineering excellence with unmatched value for money. We are today one of the most trusted names in the real estate sector in the city. This is built on our record for quality of construction, sound business ethics, great commitment and clear documents and timely possession.

About Project

Aashish Narayana Row House @ Thubarahalli near Marathahalli and Whitefield is the premium residential Row Houses project.

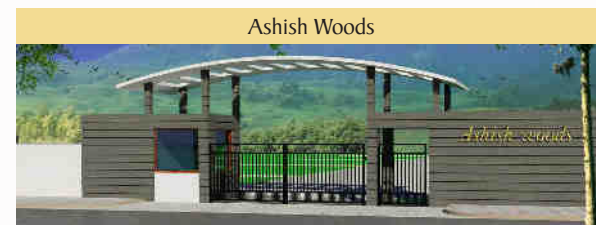
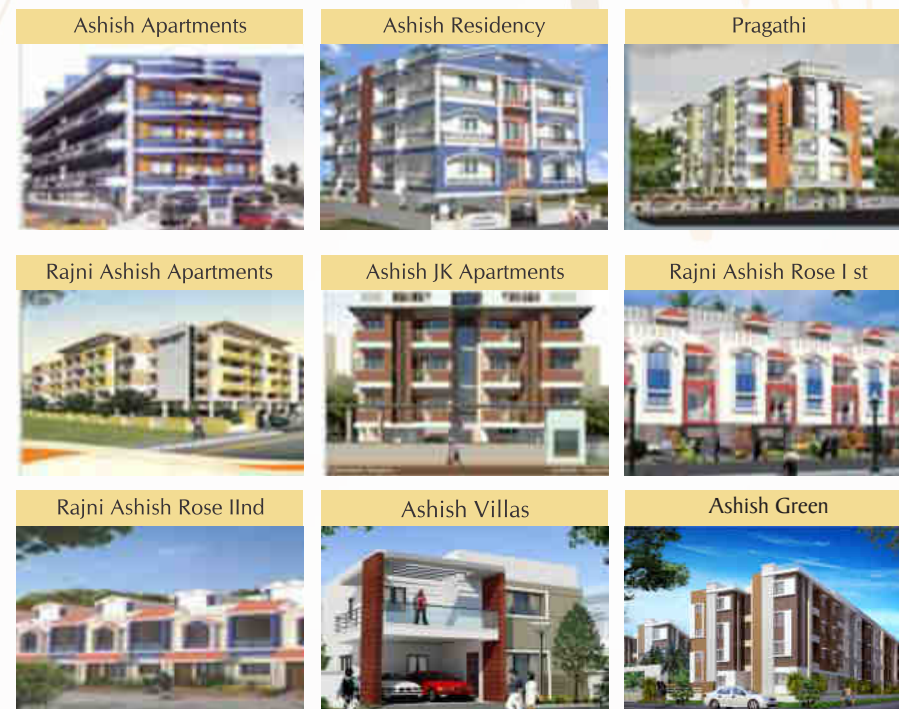
Experience the best of urban lifestyle & conveniences in the heart of Bengaluru.

The project spreads its boundaries with lush green stretches and has ample open spaces along with a day-long natural ventilation.

3 BHK Premium Row Houses with private garden and no common wall.

Our Projects

COMPLETED



ON-GOING



Welcome to a finest address...

Become a part of the residences that are crafted to match your aspirations



FLOORING

- Vitrified Tiles for living, dining, bedrooms & Kitchens areas.
- Wooden flooring in one bedroom.
- Anti skid Ceramic tiles for all toilets, balconies, utility area and parking area.
- Staircase granite flooring with stainless steel railing
- Granite flooring in ground flooring

WALLS

- Putty finished acrylic Emulsion painting for all interior walls and ceiling.
- Exterior wall surfaces painted with exterior emulsion paint.

STRUCTURE

- Framed RCC Structure with RCC beams and columns.

WINDOWS

- UPVC or Aluminum sliding windows with guard bars & plain Glass.
- Mosquito mesh shutter in all bedrooms, kitchen, living and dining room.
- Tuffen glass railing with stainless steel frame in 2 balconies.

TOILETS

- Pressure checked plumbing and drainage lines to ensure total leak proof toilets.
- Jaquar / Hindware or equivalent C.P. fittings.
- White colored Sanitary Ware
- Hot and Cold water tap with diverter and overhead shower.
- Hot and Cold water tap for wash basin in all toilets.
- Wall Hung Commode in all toilets.
- Counter top wash basin in all toilets.
- Provision for Exhaust fan & geyser.
- Select glazed / ceramic / tile dado up to 7'0" ht

DOORS

- Main door frames of Teakwood, Shutters of teak veneer and melamine polished.
- Inside Doors skin doors with melamine polished.

KITCHEN

- 'L' shaped polished Granite counter top.
- Standard size stainless steel sink with drain board.
- Ceramic glazed tiles dado up to 2'0" ht above platform.
- Provision for Aqua-guard, Exhaust Fan and adequate power points in Kitchen.
- Provision for Washing machine point with plumbing & water drain line in utility area.

ELECTRICAL

- T.V. and telephone points in all bedrooms and living area.
- Electrical switches of Anchor Roma/Havells or similar brand.
- One Earth Leakage circuit Breaker (ELCB) for each Row House.
- Earthing with copper wire using loop system.
- A/C point in all bedrooms and living area.
- CCTV provision with cabling inside the house.

AMENITIES

- Plush Green Landscaped Surroundings
- Children's play area
- Swimming pool
- Gymnasium
- Party Hall
- Indoor Games
- 2 Car parks on the Ground Floor
- Electric Vehicle charge point in the Car Parking Area
- Rainwater Harvesting
- Common underground and overhead water tanks with borewells.
- Solar Hot water system for each house.
- Provision for high speed Broadband Connection
- Intercom from every House to security
- Main door lock Biometric Lock.
- Generator back up with soundproof Acoustic enclosure for common areas and pump.

Everything you wished for

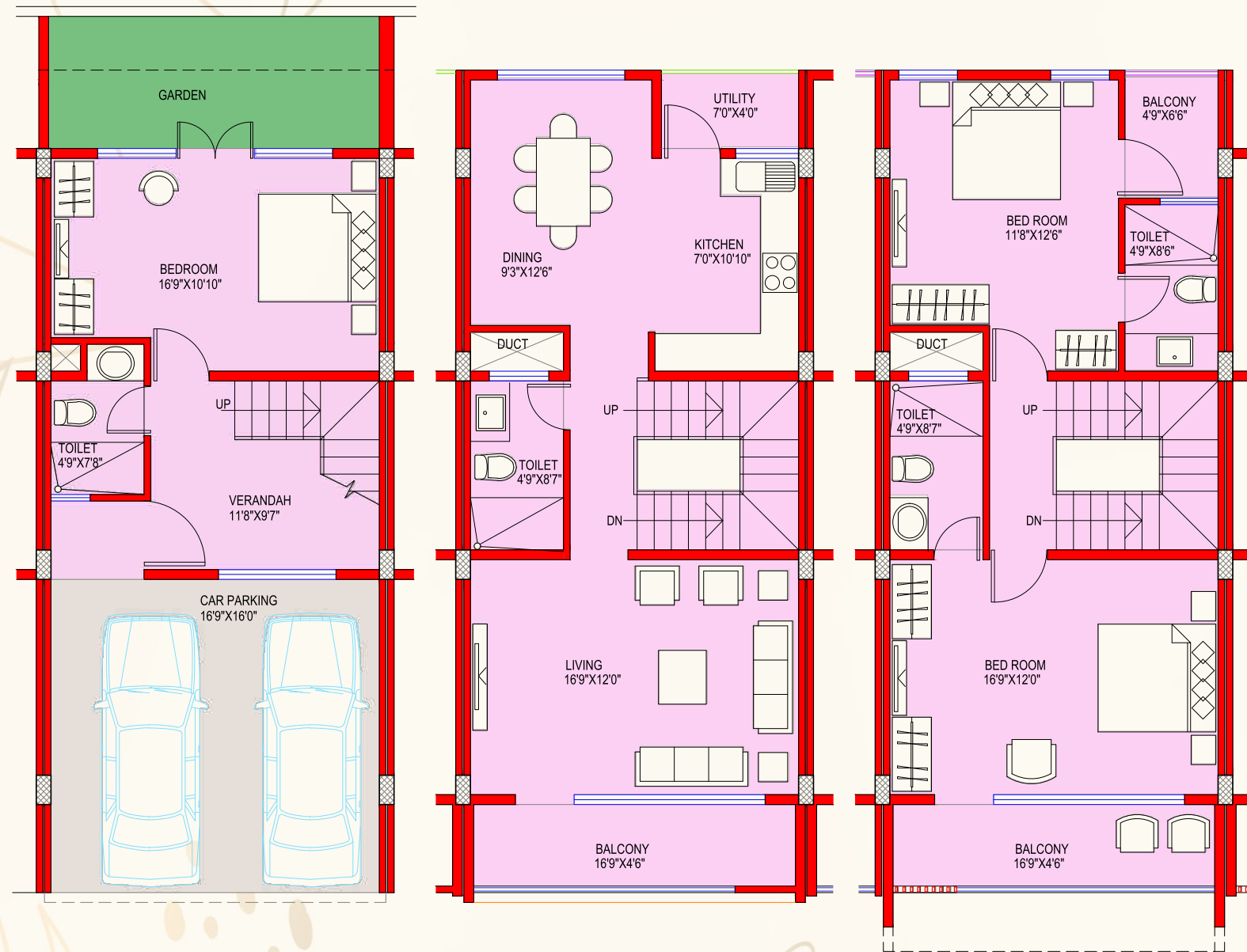
The lush greenery and the surrounding facilities create endless opportunities for you & your loved ones. From children to grandparents, everyone is sure to find all the things they love.

Ashish
Narayana
~ ROW HOUSE ~



A
place
where
air, light
is a gift
with
good
environemnt





Size - 2200 sq ft

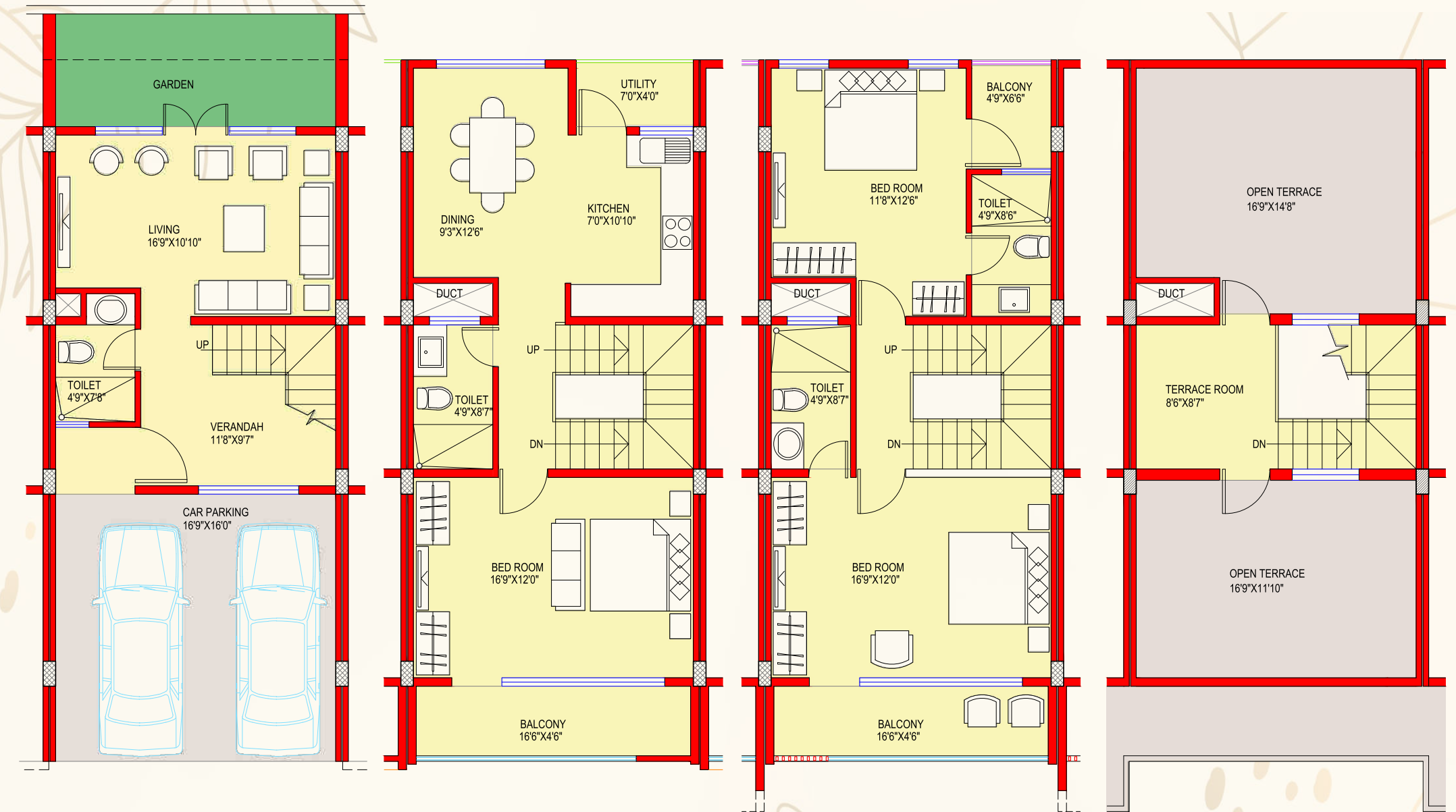
GROUND FLOOR PLAN

FIRST FLOOR PLAN

SECOND FLOOR PLAN

TERRACE PLAN

FLOOR PLAN OPTION - 1



Size - 2200 sq ft

GROUND FLOOR PLAN

FIRST FLOOR PLAN

SECOND FLOOR PLAN

TERRACE PLAN

FLOOR PLAN OPTION - 2

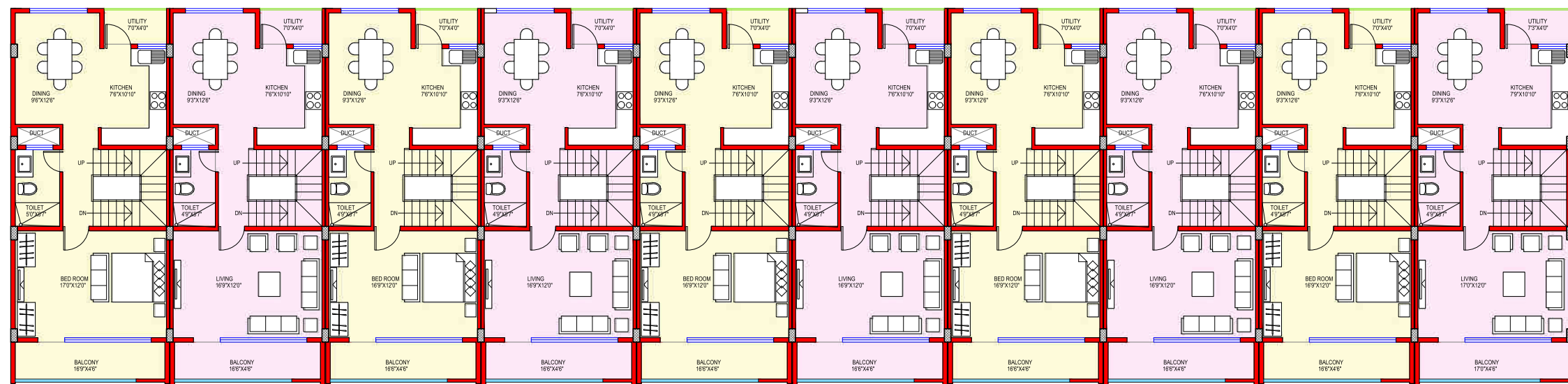


Ashish
Narayana
~ ROW HOUSE ~

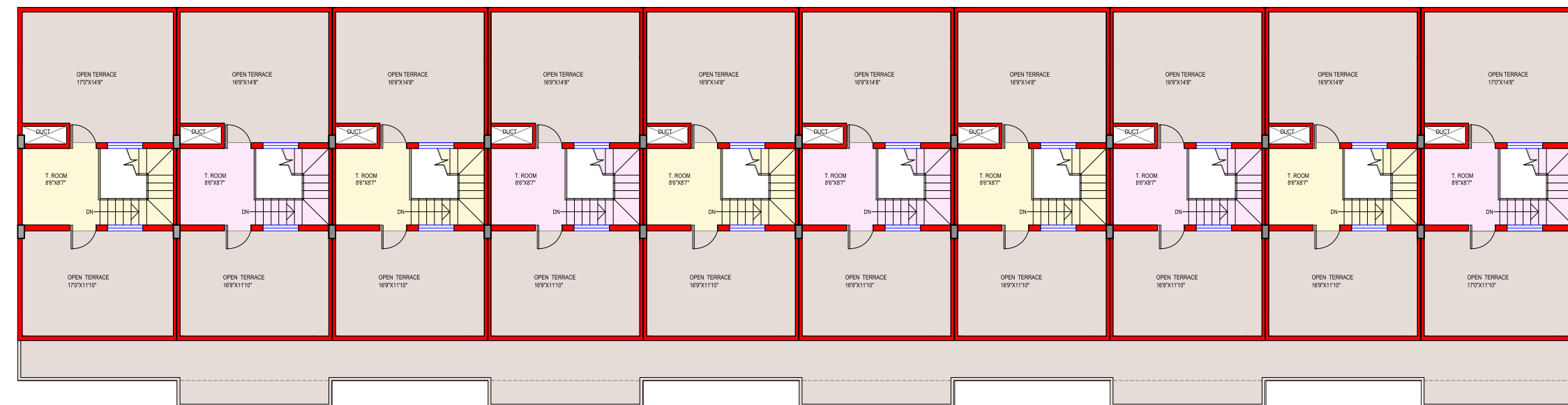
FULL PLAN

#LifeUncompromised

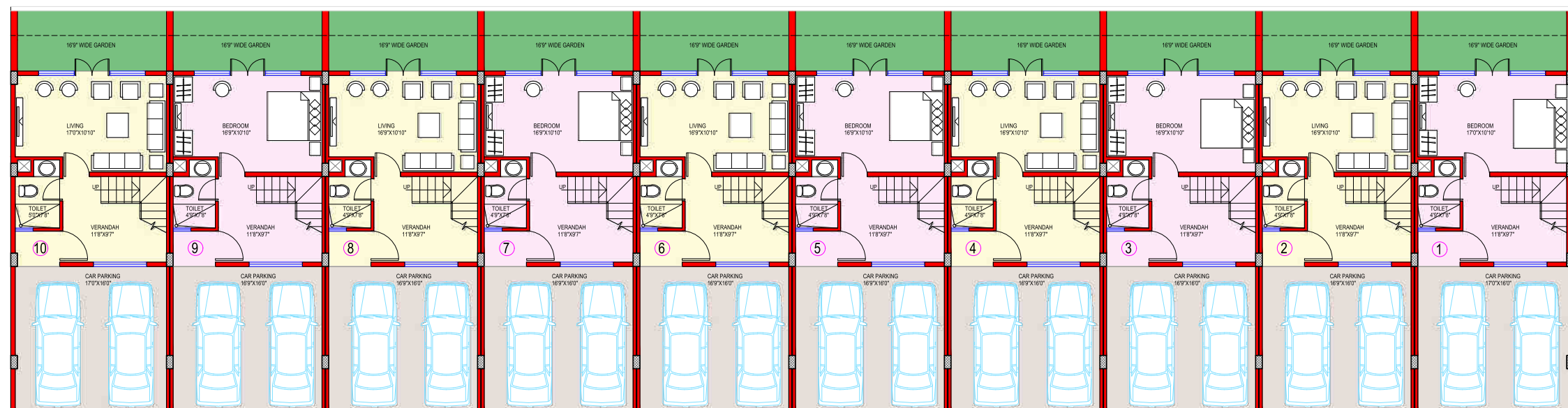
When every developer portrays ever home as a perfect fit for you, how do you find a real one that suits you perfectly? Can it really be a one-size-fits-all kind of scenario where individual & family lives in different lifestyle.



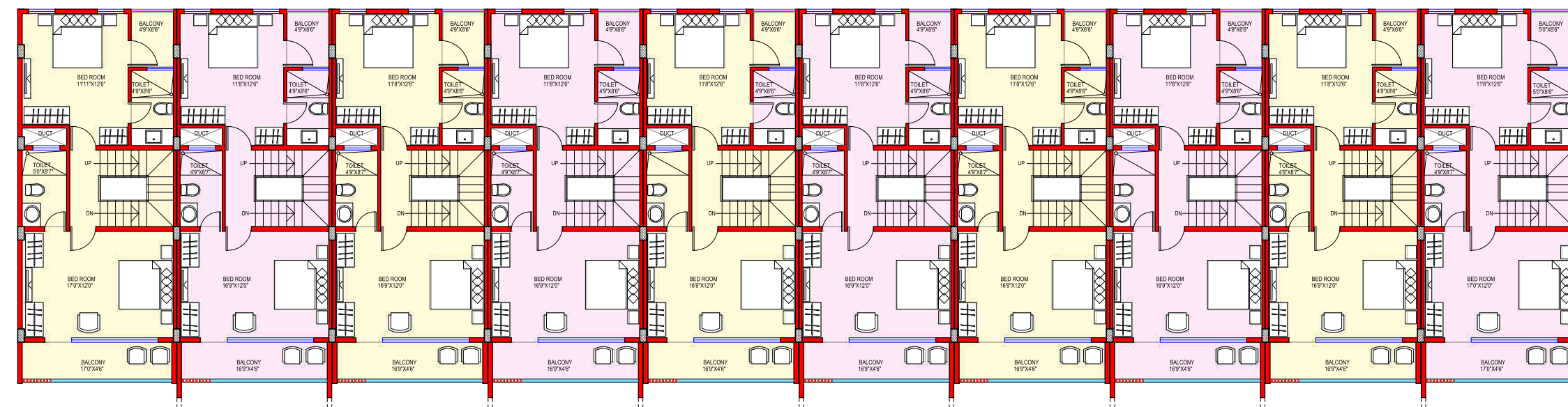
FIRST FLOOR PLAN



TERRACE PLAN



GROUND FLOOR PLAN



SECOND FLOOR PLAN

LAYOUT PLAN

